

 Made in Sweden



PRODUCT CATALOG





In a highly automated and state-of-the-art facility, situated in the middle of the Swedish province of Västergötland, we produce more than 13.500 high-quality industrial doors every year, making us one of Europe's largest folding door manufacturers.

Thanks to our almost 50 years of experience, we can offer you an industrial door solution that not only provides a high level of functionality, but also contributes to an attractive and well-considered environment throughout your premises. Our highly automated production facilities, combined with our focus on efficiency and quality, means that we can offer competitively priced doors that will ensure low costs for our customers far into the future.

Our long experience has taught us that development and manufacturing must go hand in hand. To maintain full control, we strive to do everything in our own factory.

By listening to the needs of clients and users, we have learnt that no single product suits everyone, and that the design has great significance for the whole. The doors must be custom-built according to the opening, and they must be simple to install and maintain.

Quality pays off. That's why our products come with a 7-year warranty as standard, and have the fewest maintenance requirements on the market. It costs to maintain high quality, while the right sales price is also important. Automated production and organizational efficiency are therefore our highest priorities.

It is not only the product that constitutes the whole, all the encompassing services are often just as important. Let our Technical Support department assist you while our installation team ensures that your Prido door is installed the way you expect it to be.

Short delivery times and high delivery reliability are our defining characteristics – get in touch with us to see what we can offer you.



Ecolid manual folding doors	4
Ecolid motor operation folding doors	12
Ecolid framed hinged door	22
Ecolid steel door	26
Ecolid project planning guideq	32
Ecolid technical facts	38
Ecolid colour chart	43
Build your Prido door	43
Revolid rapid roll door	46
Revolid project planning guideq	51
Revolid colour chart	54
Revolid technical facts	55
Deliveries	57



ECOLID[®]

FOLDING DOORS

Some facilities require folding doors with a little extra class. Facilities where aspects such as design, function and economy are equally important to consider. As the name suggests, Ecolid truly is an economically sound and eco-friendly option, which also has a high-finish surface and minimal maintenance needs. So, if you need a well-insulated, affordable and stylish folding or hinged door, you don't need to look any further.

MANUAL OR MOTORIZED FOLDING DOOR?

Prido's sales strategy is to deliver high quality at the right price. Unlike many other door manufacturers, we are completely uninterested in aftermarket services. Our goal is not to sell services but to deliver quality right from the start. The door in our range that best lives up to our strategy is the manual folding door. Why is that?

A manual folding door from Prido is a durable purchase. The folding door is designed to last a long time. The door is endurance tested for 1 million opening cycles. Properly installed, it is virtually indestructible. Durability doesn't only mean a long service life. Our sandwich design also provides a U-value that is approximately 40% better than frame-built folding doors.

The folding door is operationally reliable. With all due respect to electronic and automatic doors, they don't last forever and can also be vulnerable to external forces. A manual folding door basically never fails. Prido sells 14,000 doors a year and has 50 years of industry experience. Trust us, we know the difference between different types of industrial doors.

A manual folding door is easy to open and close, even when it's 7 meters wide and 6 meters high, thanks to the smart design.

The cost of maintenance is extremely low. When investing in an industrial door, it's important to consider the cost of maintenance, which is what it costs to own the door. For some door types, the purchase price is just a small part of the total cost. Many door manufacturers specify service intervals of 6-12 months, and each service can be costly.

We dare say that our manual folding door is essentially maintenance free. In normal industrial environments, no maintenance is required. In environments where the doors get very dirty, washing may be required to maintain the rust protection. Care and maintenance do not require specialist expertise.

Folding doors are synonymous with a greatly reduced risk of collision injuries. The human field of view is larger horizontally than vertically. Vertically, the field of view can also be limited by the roof of a vehicle, for example. The sideways movement of a folding door means that the costly repairs of damage caused by collisions with bottom sections are virtually eliminated. In the unlikely event of an accident, it is exceptionally easy to replace a folding door leaf. Unlike a ceiling track door, for example, a door technician is not required to carry out the replacement.

The folding door is designed for quick and easy installation. A manual door can be installed by anyone who is handy, even without specialist knowledge. But if you would like help with the installation, Prido has qualified installers throughout Sweden. Thanks to its simplicity, the installation cost will be significantly lower than for other types of industrial doors.

The folding door fits in most door openings since it requires minimal space to the side and overhead, and it is available with either inward or outward opening.

Last but not least, a manual folding door from Prido is Sweden's best-selling industrial door. That proves that we have satisfied customers!

BENEFITS OF A FOLDING DOOR FROM PRIDO

- Sweden's best-selling folding door
- Developed and manufactured in Sweden
- Endurance tested for 1 million opening cycles
- Low maintenance costs
- Highest-quality design and finish
- Approx. 40% higher U-value than frame-built folding doors
- 3-4 times higher airtightness than a normal ceiling track door
- Quick and easy to fit and remove
- Requires minimal space to the side and overhead
- Robust and easy-to-move automatic mounting brackets
- Highly effective rust protection
- The design eliminates the risk of crushing
- An eco-friendlier option
- CE-certified according to European standard on doors EN13241
- Completely made to order in many different designs
- Short delivery times and high delivery reliability
- 7-year warranty



A quality Swedish door from Tråvad





DETAILS AND ACCESSORIES

STANDARD



Standard hinges



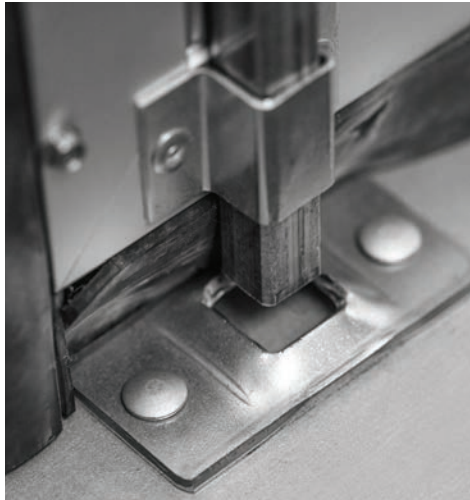
Frame control



Middle hinge



Centre control



Espagnolette guide



Standard garage bolt for internal padlocking

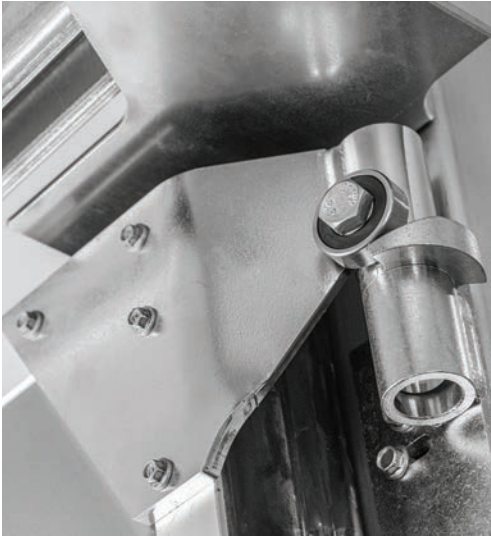


90° mounting bracket for inward opening



90° mounting bracket for outward opening

OPTIONAL EXTRAS



Lifting hinges



145° mounting bracket for outward opening



Burglar bars



Fix 480 (outside)



Fix 480 (inside)



Ventilation (outside)



Ventilation (inside)



Door closer for recessed pedestrian door



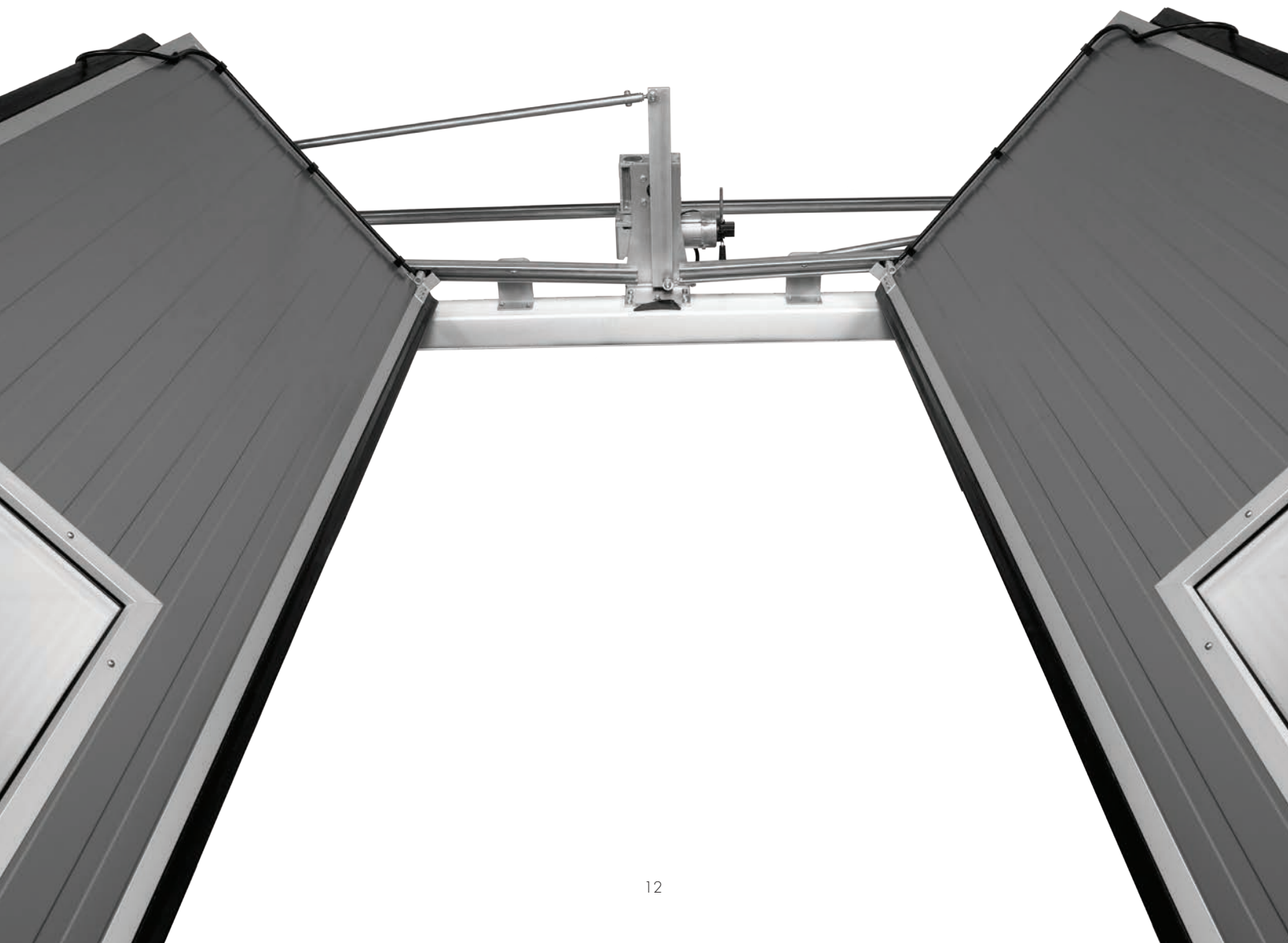


MOTOR OPERATION PRIDRIVE

**“The future is here,
be a part of the evolution with the PriDrive solution”**

Motor operated industrial doors have been around for a while but our new PriDrive solution gives you as a door owner radically improved conditions.

Motor operated industrial doors that used to be either an expensive investment or involved costly ownership are now the obvious industrial door option. PriDrive is based on our well-known Ecolid folding door, Sweden's top-selling industrial door, but it equipped with our brand new proprietary door motors and controls. Our normal motto that the products should be cost efficient both to buy and to own combined with simple installation and use has also permeated the development of PriDrive.



BENEFITS OF A MOTORIZED PRIDRIVE FOLDING DOOR

- A substantially lower investment cost compared to other motorized folding doors on the market
- Probably the market's lowest maintenance requirements and maintenance costs
- 18 months between servicing (12 months at more than 50 openings per day)
- 50% faster opening, approx. 11 seconds (approx. 20 seconds for a 4 meter high ceiling track door in standard version)
- Significantly reduced risk of collision due to the horizontal movement
- Easy installation and door surrounds, minimal impact on other installations above the door opening and on the ceiling
- Modern control unit with simple installation, commissioning, programming and user interface
- High reliability with few wear parts and few moving parts
- Developed and manufactured in Sweden
- 7-year warranty on doors and mechanical components
- 2-year warranty on electronics





We are not just a supplier of doors. You can think of us as a partner who wants to make sure you are happy with your purchase. It is not only the product that constitutes the whole, all the encompassing services are often just as important. Let our Technical Support department assist you while our installation team ensures that your Prido door is installed the way you expect it to be.

Lucas
Geyzon





PRIDRIVE: CONTROL CABINET AND CONTROL AND ADJUSTMENT OPTIONS

- Easy connection – the motor cable and power cable are factory-connected to the control cabinet and connect to the motor via a plug-in connector and via CEE plug to the network.
- Installation does not require a licensed electrician.
- Other connections are made via the spring-loaded terminals directly on the PCB.
- The control cabinet is always supplied with 6 fitted and IP-rated cable grommets for various accessories.
- Commissioning is very simple thanks to the user-friendly interface, and usually only takes a few minutes.
- Commissioning and programming is all done via a push-and-turn button.
- Operating data and current program selections are shown to the user on a 3-panel LED display.
- The door's limit positions for open and closed are set completely digitally with just a few buttons.
- The control unit is equipped with an easily activated automatic close feature between 0 and 999 seconds as standard.
- The control unit has an alternating relay for connection to and communication with other devices in the building, such as alarms, locking systems, fans, loading ramps, and machines.
- It has an integrated cycle counter which can be accessed easily via a knob and the LED display, an invaluable feature for keeping servicing costs down.

ACCESSORIES



Emergency stop



Traffic light



Pushbutton box



Ground loop via inductive loop detector



Wicket door switch



Remote controls



Radio receiver



Drawstring switch



Key operated switch



Code lock



Radar



TAKE THE DOOR'S

MAINTENANCE COST INTO ACCOUNT

A folding door, particularly Ecolid, is the obvious choice if you want to avoid high costs.

Many of the components which contribute to high maintenance costs in other door types are not needed in a folding door. We are referring primarily to torsion springs, wires and side guide rollers.

The folding door's sideways movement means that the number of collision injuries with collapsed bottom sections and very expensive repairs almost disappear. Our 450 years of experience shows that collisions reduce by approx. 75% if you choose a folding door instead of a vertical sliding door.

The Ecolid door is optimised to require a minimum level of service. During normal use, we prescribe an 18-month interval between each service on motor operated doors. The service that will be performed is very simple; in principle it involves checking screws and bolted connections.

This is a small job that can be managed without the need of specialised door technicians.

The function of the door's anti-crushing protective strips, photocells and load monitor should also be checked annually.

These actions are also simple and can be performed without professional assistance.

Should any part need to be replaced, you can buy it directly from us as manufacturer without intermediaries at the lowest price.



0 KR

ECOLID – manual








14.128 KR

ECOLID with PriDrive motor



33.870 KR

OVERHEAD DOOR - motor operated

		
<p>Service and call out cost : SEK 0 each time</p>	<p>Service and call out cost every 18 months: SEK 1,155 each time, 6 times/10 years</p>	<p>Service and call out cost every 12 months: SEK 1,155 each time, 10 times/10 years</p>
<p>Inspection by inspection body: SEK 0 each time</p>	<p>Inspection by inspection body: SEK 1,000 each time, 5 times/10 years</p>	<p>Inspection by inspection body: SEK 1,000 each time, 5 times/10 years</p>
	<p>Replacing Teflon bushings and sealing strips: Normally replaced once every 10 years Material SEK 398, labour SEK 1,800</p>	<p>Replacing torsion springs: Normally replaced after 25,000 openings Material SEK 10,400, labour SEK 3,600</p>
		<p>Replacing wires, side rolls and side seal: Normally replaced after 50,000 openings Material SEK 1,520, labour SEK 1,800</p>
<p>Total cost 10 years = SEK 0</p>	<p>Total cost 10 years = SEK 14,128</p>	<p>Total cost 10 years = SEK 33,870</p>

Prerequisites: Doors 4x4 m, 20 openings per day, 250 days/year, hourly rate SEK 600, distance to service firm 30 km, SEK 850/km, 10 year usage. It is assumed that inspections by inspection bodies are performed in connection with other inspection in the same operating site. Ecolid's material costs according to Prido AB's spare parts price list. The overhead door's spare parts prices are according to information from an established service firm.







ECOLID®

FRAMED HINGED DOOR

The Ecolid framed hinged door is based on Sweden's bestselling folding door of the same name. The hinged door is equipped with a torsionally rigid C-frame made of natural anodized profiles with thermal break and integrated tracks for EPDM rubber seals. The door is designed to be placed on exterior façades and is therefore equipped with interior mounting brackets which keep the door leaves in the open position.

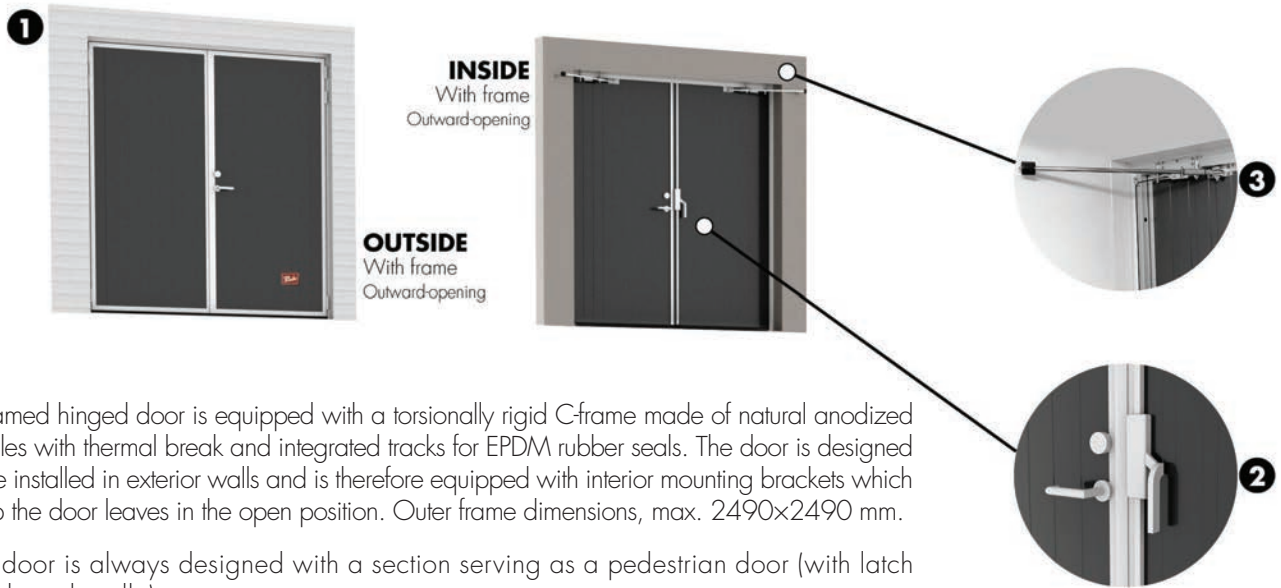
BENEFITS OF A HINGED DOOR FROM PRIDO

- Entirely made to measure, max. outer frame dimensions 2,490 x 2,490 mm
- 11 standard colors
- Supplied with frame screws and adjustment sockets fitted to the frame
- Easy and quick to assemble, the components screw together
- Bottom seal against floor
- Easy to use automatic mounting brackets for 90° opening
- Highly effective rust protection
- Windows (optional extra) in 6 sizes with aluminum profile frames
- Window frames with thermal break
- Lock housing with hook bolt lock on the door leaf
- Powerful lever handle included as standard
- Garage bolt for padlocking the side leaves
- Low maintenance costs
- In normal industrial environments, no maintenance is required.
- The doors are developed and manufactured in Sweden
- CE-certified according to European standard on doors EN13241
- Endurance tested for 1 million openings according to EN13241
- 7-year warranty



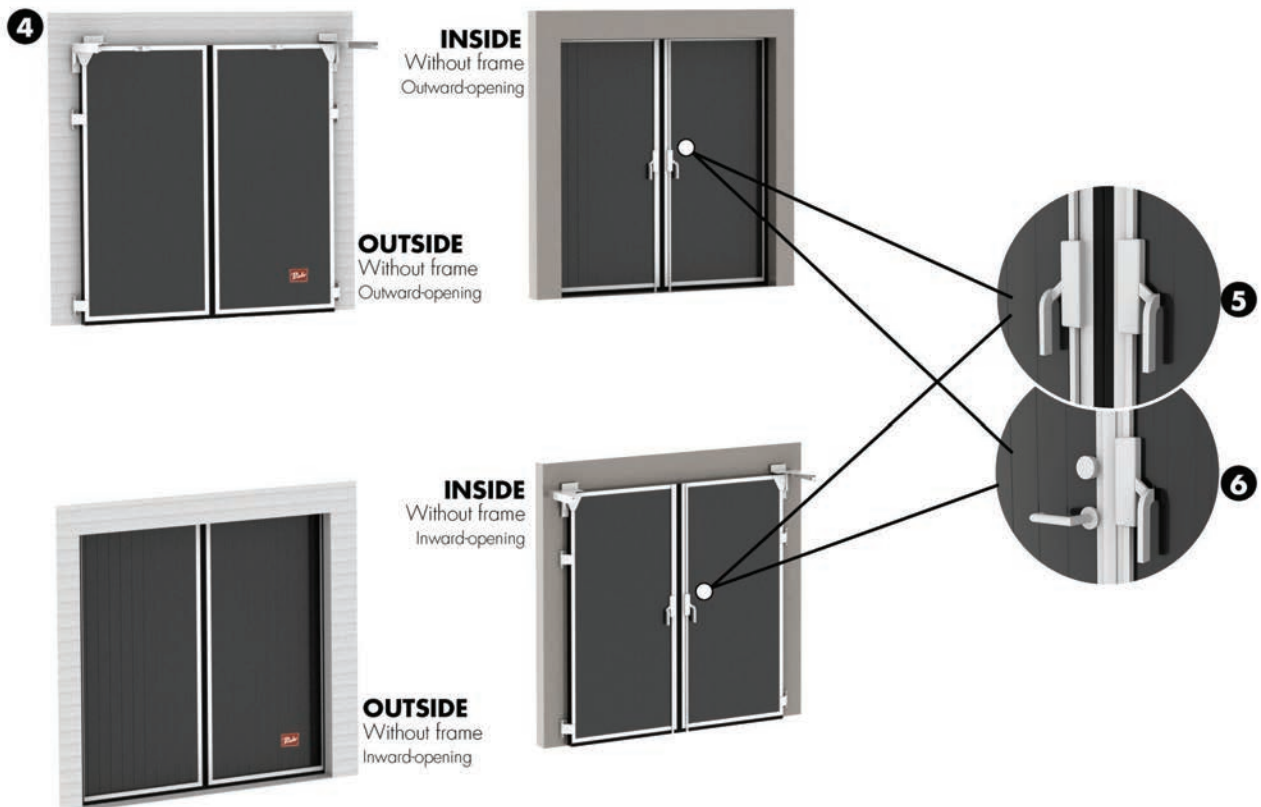
DESIGN / OPENING OPTIONS

HINGED DOOR WITH FRAME



1. A framed hinged door is equipped with a torsionally rigid C-frame made of natural anodized profiles with thermal break and integrated tracks for EPDM rubber seals. The door is designed to be installed in exterior walls and is therefore equipped with interior mounting brackets which keep the door leaves in the open position. Outer frame dimensions, max. 2490x2490 mm.
2. The door is always designed with a section serving as a pedestrian door (with latch and lever handle).
3. Easy-to-use automatic mounting brackets for 90° opening are supplied as standard.

HINGED DOOR WITHOUT FRAME



4. A frameless hinged door from Prido is similar a folding door in many respects. The door is manufactured for overlap installation and has a bottom seal against the floor. The design of the hinged door can be inward-opening or outward-opening.
5. As standard, the hinged door without frame can only be opened and locked from the inside.
6. Hinged door without frame be designed with a section serving as a pedestrian door (with latch and lever handle) if the door height does not exceed 3200 mm.



The hinged door is best suited for small and medium-sized openings with light foot or vehicle traffic. It is based on our well-known Ecolid folding door and offers the same high quality with top-class rustproofing. The hinged door is essentially maintenance-free thanks to the carefully chosen and durable materials. The door is tailored to the door opening in one of our 11 standard colors. Max. outer frame dimensions 2490x2490



ECOLID®

ECOLID STEEL DOOR

Ecolid steel doors are based on our industrial door of the same name, and, like it, they are an economically sound and eco-friendly option, which also have a high-finish surface and minimal maintenance needs. Material choice, surface coating and design are harmonized with the industrial door to provide the best architectural solutions when doors are placed adjacent to each other.

BENEFITS OF A STEEL DOOR FROM PRIDO

- Based on 'Ecolidporten', Sweden's bestselling folding door
- Highest-quality design and finish
- Short delivery times and high delivery reliability
- Approx. 40% higher U-value than steel frame doors
- Thermal break in the frame
- Aluminum frame with high torsional stiffness and integrated seal tracks
- Highly effective rust protection
- Quick and simple to install with the supplied frame screws and adjustment sockets fitted to the frame
- Minimal maintenance requirements
- Developed and manufactured in Sweden
- Completely made to order in a variety of designs
- Standard design available for immediate delivery
- Powerful lever handle included as standard
- Adjustable security strike plate as standard
- Manual Attack Resistance class RC2 in accordance with EN1627
- Back edge lock as standard
- Airtightness class 4 in accordance with EN12207
- CE-marked according to European standard EN14351-1
- 7-year warranty

DETAILS AND ACCESSORIES



Code lock (optional)



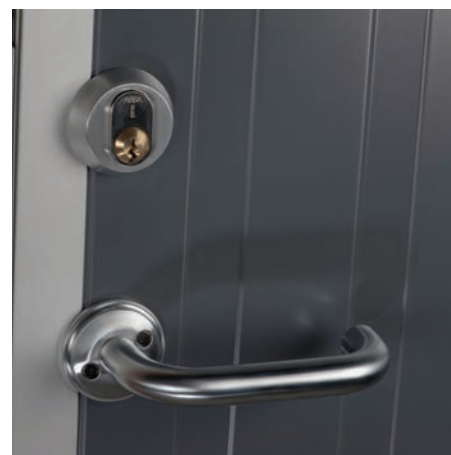
Elektrisk sluttstykke (ekstrautstyr)



Hook bolt lock



Door closer (optional)

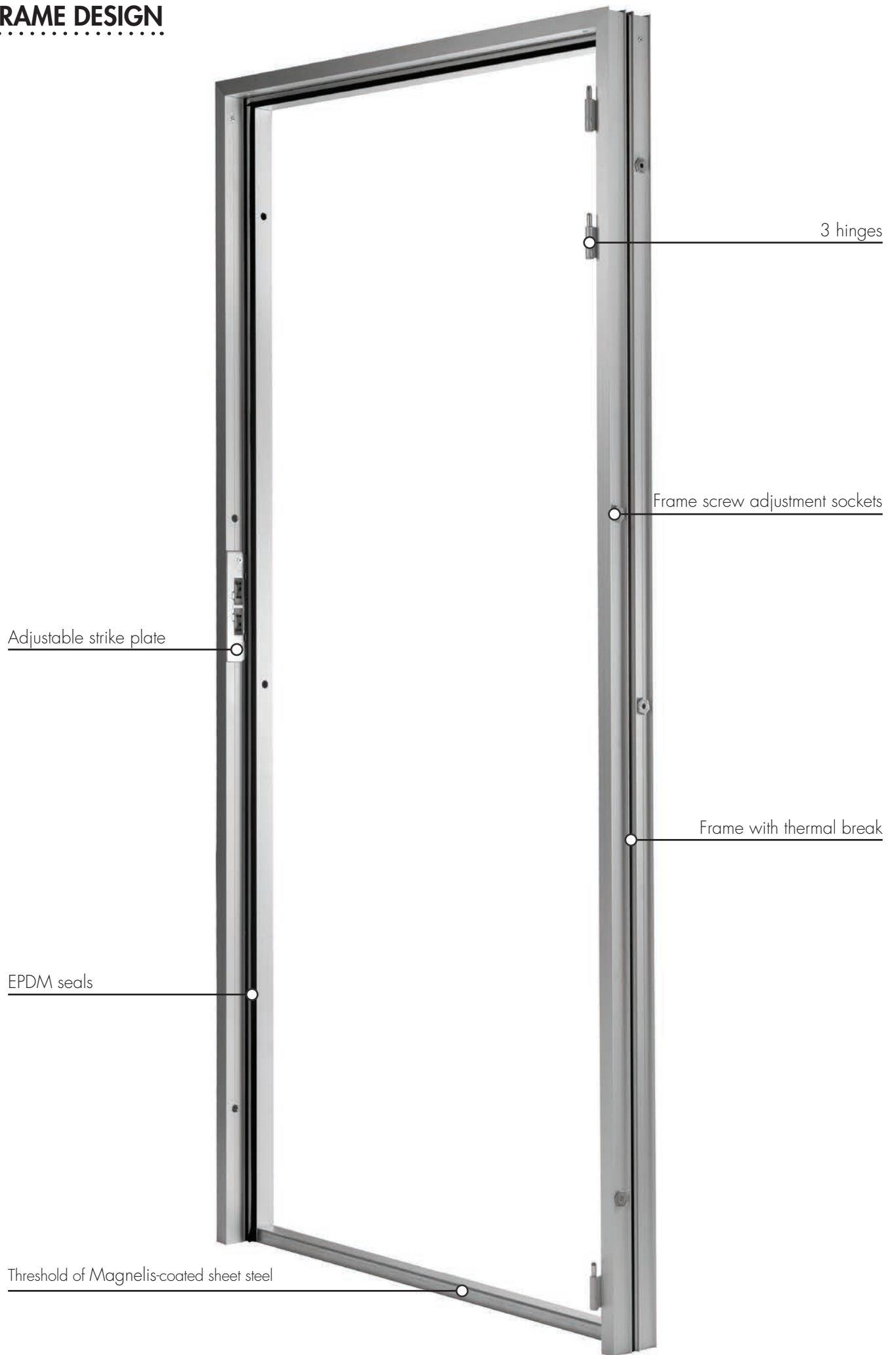


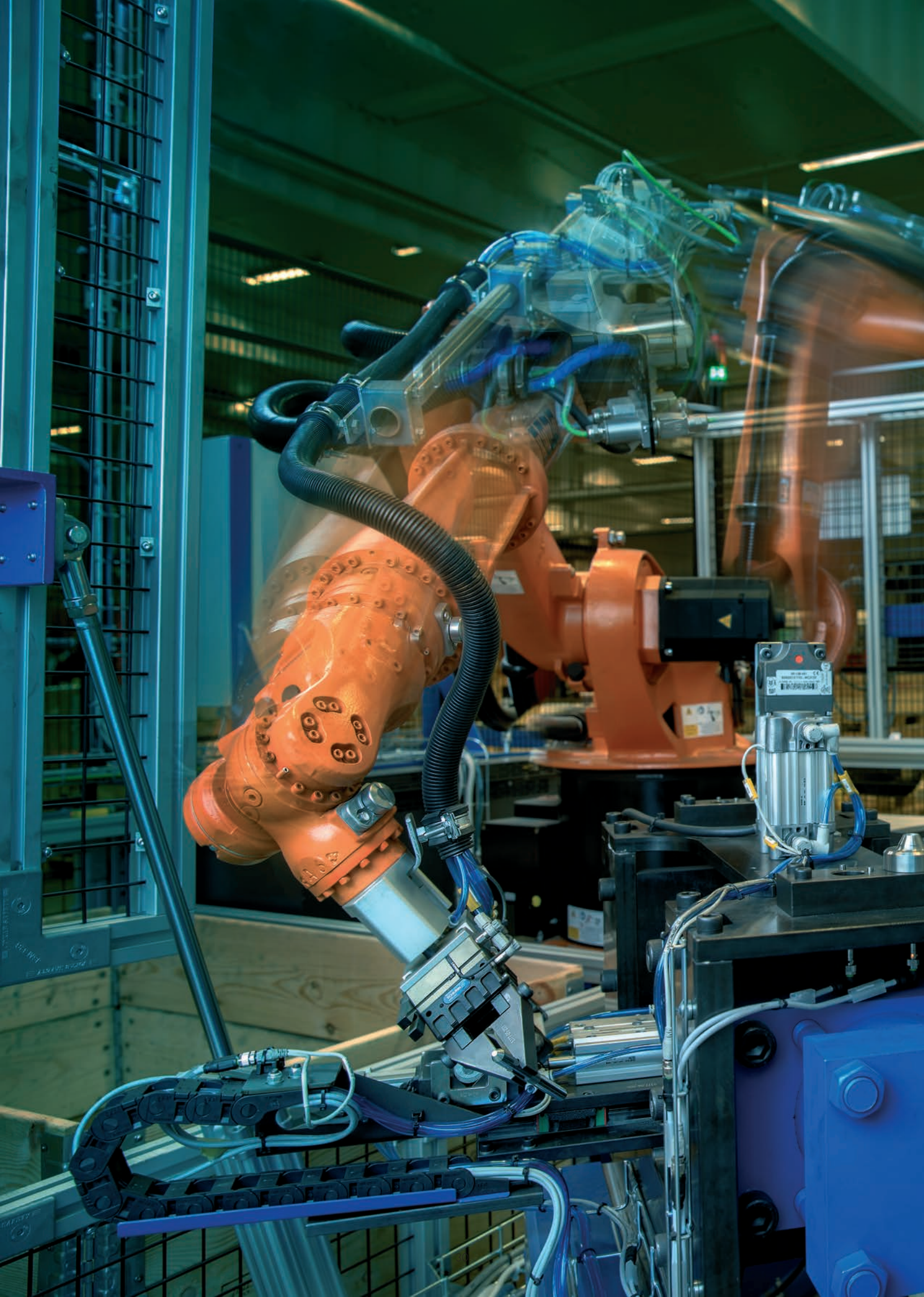
Lever handle



Yale Doorman can be retrofitted to an Ecolid steel door but is not included in Prido's range of accessories. We recommend checking with a local distributor.

FRAME DESIGN



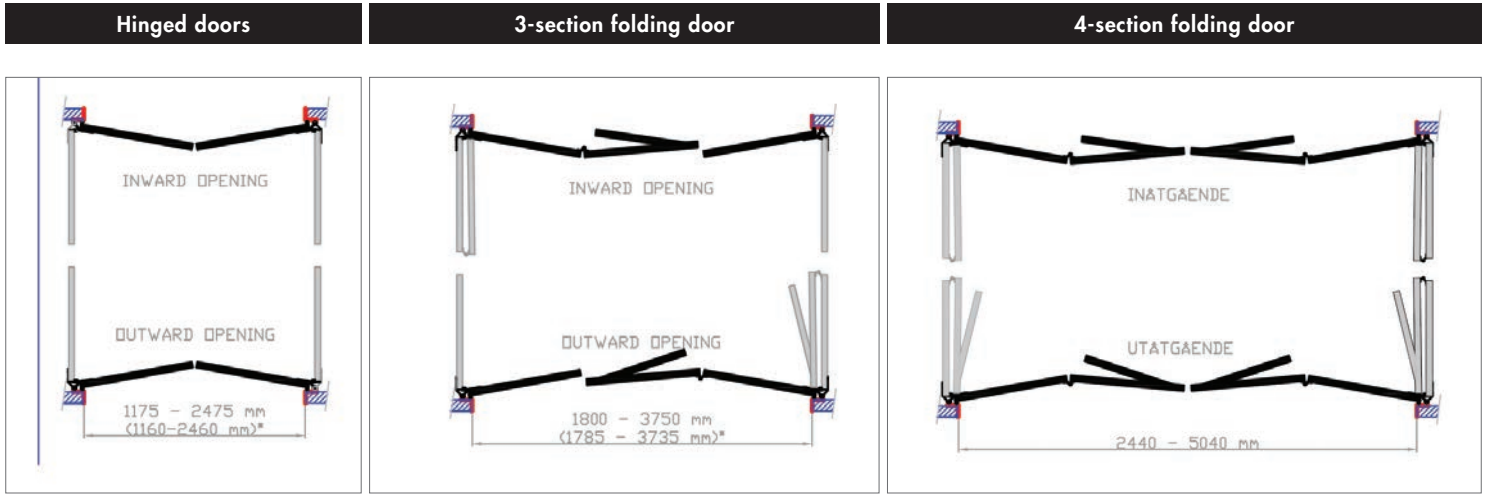


All production takes place in our own factory in Tråvad in the heart of Västergötland. Automation and efficiency are top priorities for delivering the highest quality doors at the right price.

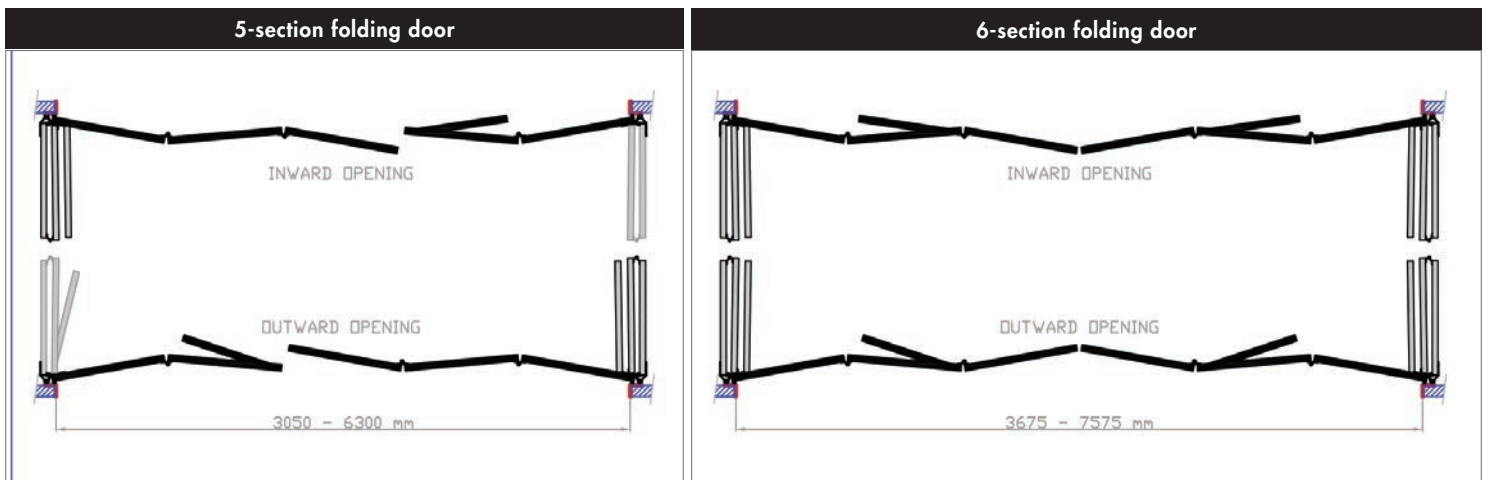


PROJECT PLANNING GUIDEQ

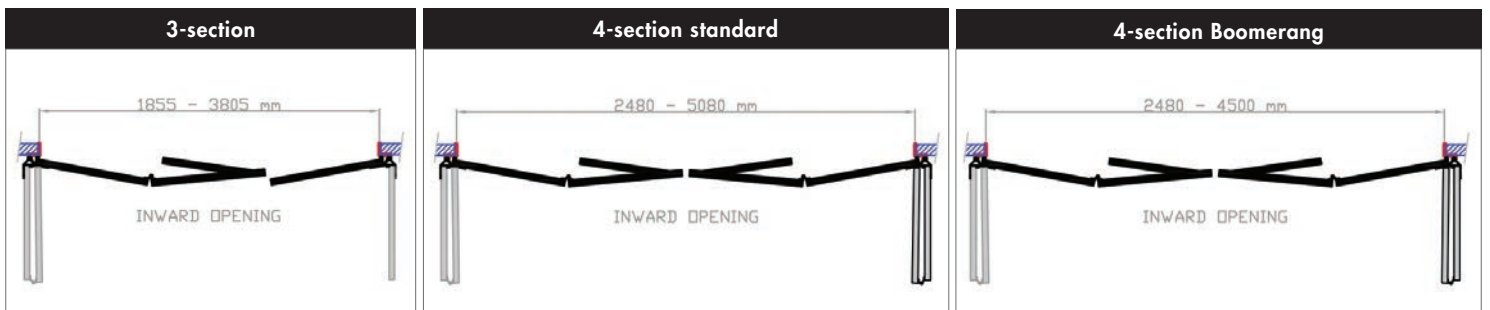
OPENING OPTIONS – ECOLID (MANUAL)



* Dimensions in brackets apply for sections such as wicket doors.

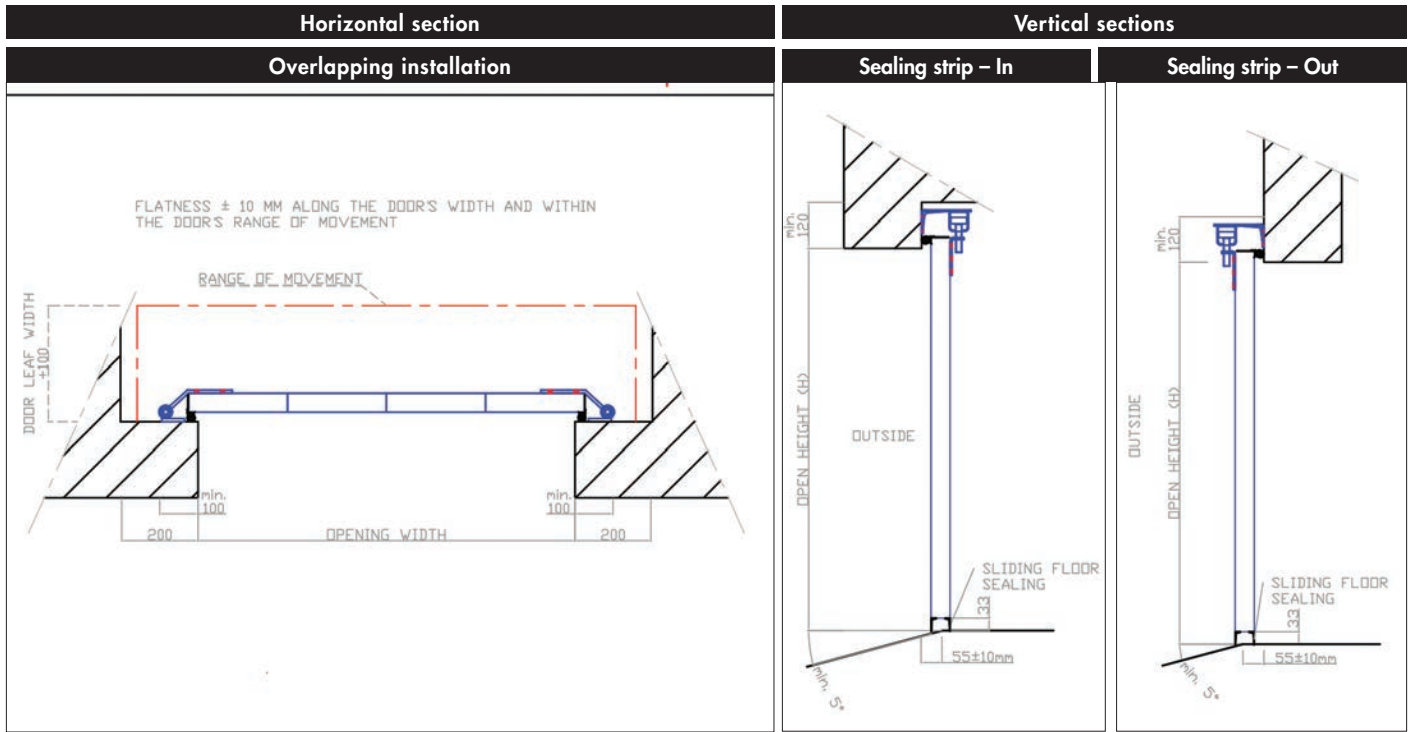


OPENING OPTIONS – ECOLID (PRIDRIVE)



..... MOUNTING DIMENSIONS – ECOLID (MANUAL)

Max. height = 6,008 mm (4600)
 With a component such as wicket door = 3,200 mm
 (Dimensions in brackets refer to hinged doors.)



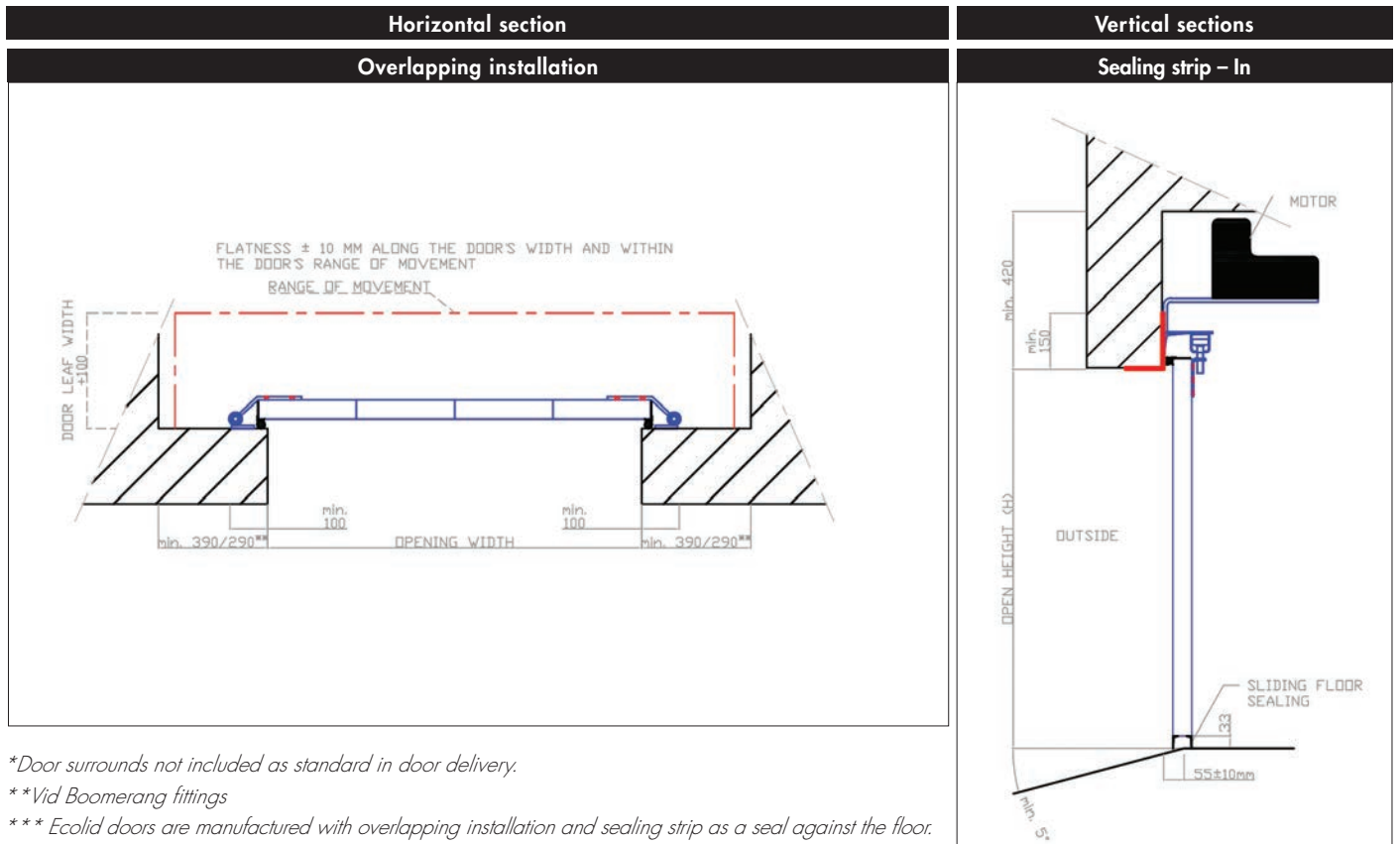
..... MOUNTING DIMENSIONS – ECOLID (PRIDRIVE)

Standard:

Max. height: 4800 mm
 Max. width: 5080 mm
 Max. surface: 23,15 - 23,75 kvm

Boomerang:

Max. height: 4800 mm
 Max. width: 4500 mm
 Max. surface: 21,6 kvm



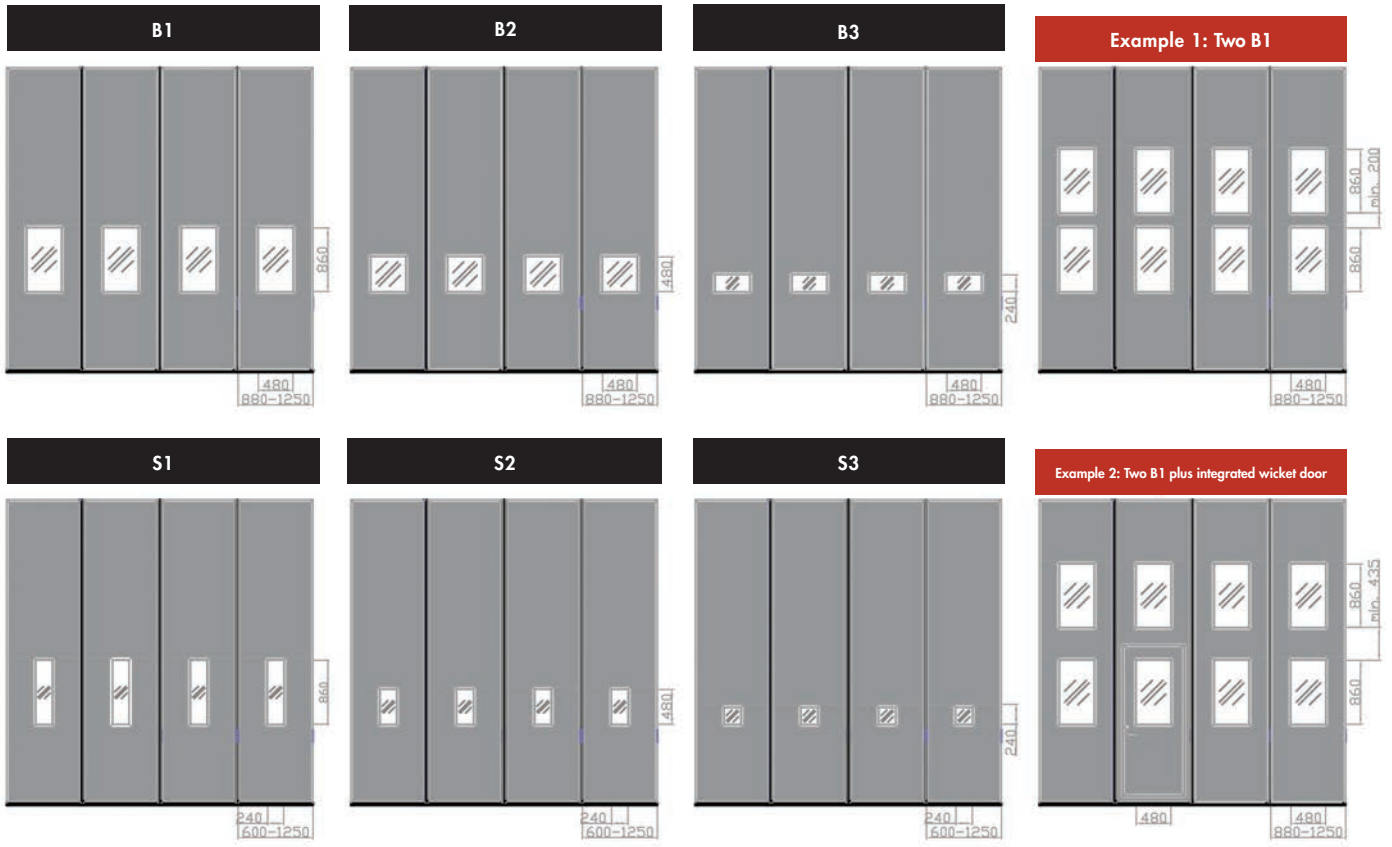
*Door surrounds not included as standard in door delivery.

**Vid Boomerang fittings

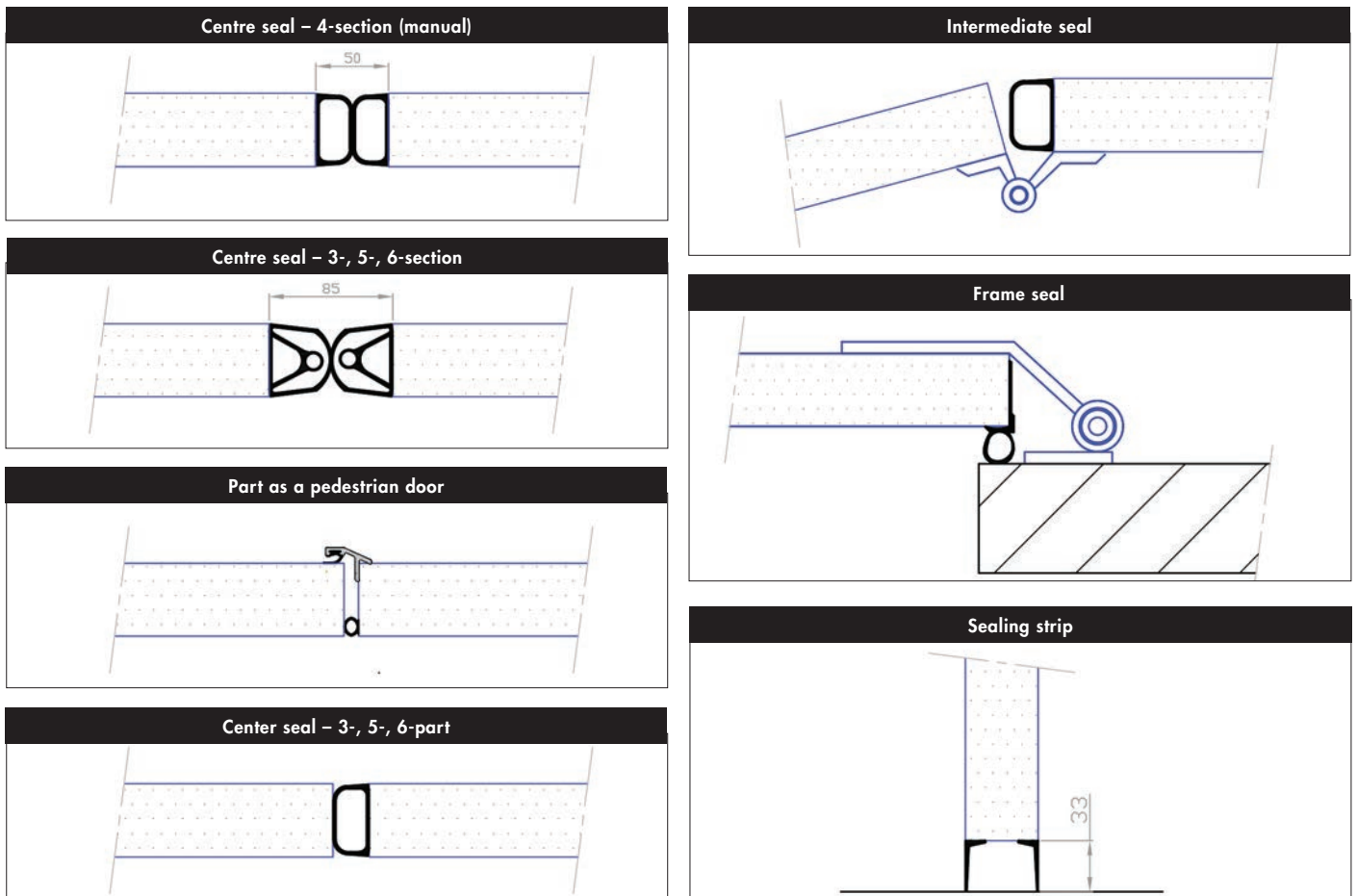
*** Ecolid doors are manufactured with overlapping installation and sealing strip as a seal against the floor.

WINDOW – ECOLID

The Ecolid door can be fitted with double-glazed argon gas-filled insulated windows. There are six different sizes in our standard range. Special dimensions are available on request. The position is optional, on the condition that they fit within the dimensions listed below. The maximum number of windows per door leaf is determined by the size. Standard breast height = 1,070 mm.

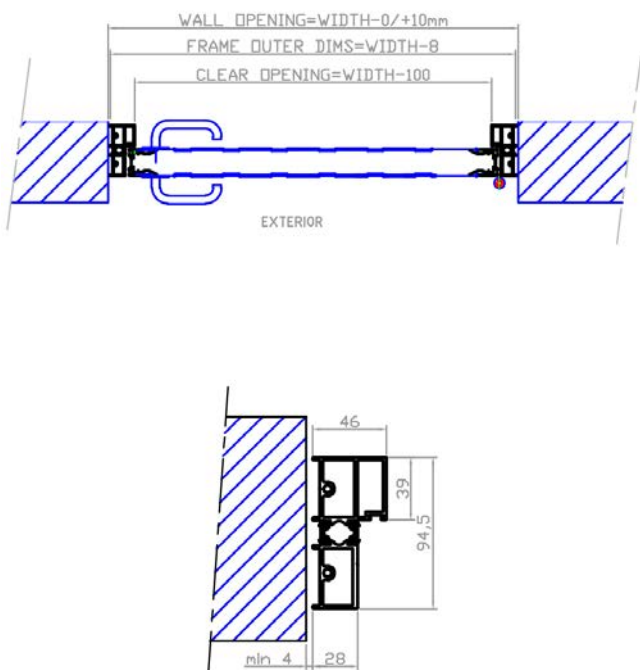


SEALS – ECOLID

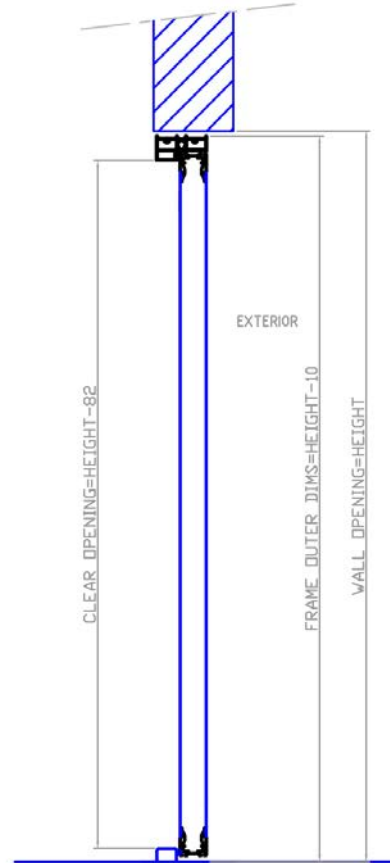


C-frame (no integrated architrave)

Horizontal section

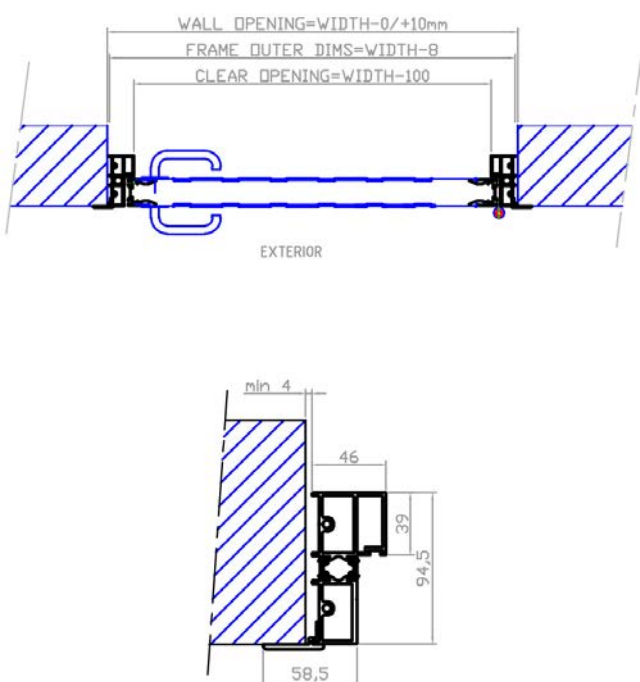


Vertical section

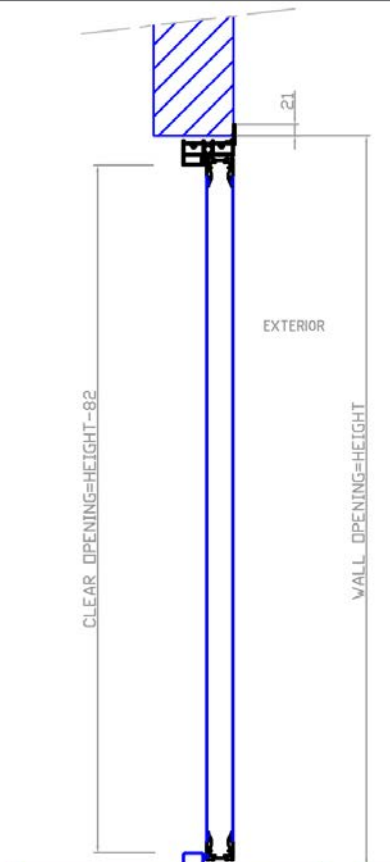


C-frame with lining strip (optional, fitted by customer)

Horizontal section



Vertical section





Quality pays off. That's why our products come with a 7-year warranty as standard and have the lowest maintenance needs on the market. Our goal is not to sell a service – instead, we want you as our customer to make a good investment in an industrial door with the lowest possible maintenance costs.





ECOLID (MANUAL FOLDING DOOR) – TECHNICAL DATA

CE Marking

The doors are CE certified as per the Construction Products Regulation according to standard EN13241.

Insulation Value

U-value 1.34 W/(m²/K) for a fully-covered 5x5 m door or 1.47 W/(m²/K) with single-glazed B1, calculated as per EN12428

Airtightness

Rating 4, 1.8 m³/m² h, as per EN12426

Mechanical durability

Configured and tested for 1.000.000 opening cycles as per EN12605

Water tightness

Rating 3 as per EN13241

Wind load capacity

Rating 2, 3, 4 or 5 depending on size. Tested and rated according to EN12444 and EN12424

Safety

Rubber moldings designed to eliminate the risk of crushing between door leaf and door leaf, and door leaf and wall. At least 3 load-bearing brackets per leaf to prevent falls.

Brackets mounted on the door leaves

Electrogalvanized steel or aluminum. On outward-opening doors, the steel fittings are also powder-coated.

Windows

Argon-filled D4-12 insulated-glass panes in six different standard sizes. Standard chest height approx. 1,070 mm. Seven-year warranty against condensation between glass panes. Window frames made from natural anodized aluminum profiles with thermal breaks.

Recessed pedestrian door

Can be provided for all variants. Always outward opening. Placement is contingent on the door, refer to Project Planning Guide A minimum door height of 2,800 mm is required to fit a pedestrian door. The pedestrian door aperture is contingent on the door leaf width and can be as small as 567 mm. Min. door leaf width with recessed pedestrian door is 770 mm. Dorma Lock Housing DL 919-50.

Pull handle

Natural anodized aluminum handle.

Frame hinge

Multi-size adjustable steel hinges. Electrogalvanized on inward opening doors and electrogalvanized and powder-coated on outward opening doors. Lubrication-free Teflon bushings. Screw into door surround.

Lifting frame hinges (optional extra)

Raises the door during opening by 10 mm. Suitable for uneven floors. Good sealing in the closed position and a soft and smooth opening movement without unnecessary wear on the bottom seal.

Middle hinge

Natural anodized aluminum. Lubrication-free Teflon bushings.

Lock

Garage bolts for inner padlocking as standard. If cylinder locking on the interior and exterior is preferred, Prido Fix 480 is available as optional extra.

Door leaf

Process-laminated sandwich panels. 50 mm thickness. Max. size of individual door leaf 1,250 x 6,000 mm. Frame for fitting rubber seals, etc. Made of natural anodized aluminum profiles. Cast steel reinforcements as attachment points for hinges, controls, etc.

Insulation

50 mm freon-free polyurethane cellular plastic.

Door surrounds

Made of steel, concrete or wood. At least 6 mm steel on a single door leaf > 6 m². Otherwise at least 3 mm steel for inward opening and at least 4 mm for outward opening. 3 different screw kits depending on the type of door surround.

Stable package

Doors placed at a car wash or in a stable environment require a special component package, such as extra corrosion protection, for the warranty to be valid. Cannot be fitted later.

Guide rails and brackets

Made of steel, hot-dip galvanized and adjustable. Screw into door surround.

Seals

Made of age-resistant EPDM rubber.

Mounting bracket

Automatic locking in the open position on both inward and outward opening doors.

Siding

Inside and outside made of hot-dip galvanized sheet steel. Coated with 25 µm polyester paint.

7-year warranty

Refer to separate document detailing our warranty conditions.

Maintenance, service

Lowest service requirements on the market. Once/36 months for manual doors.

ECOLID (MOTORIZED FOLDING DOOR) – TECHNICAL DATA

CE Marking

All Ecolid doors are CE certified as per the Construction Products Regulation according to standard EN13241. Motorized doors are also CE-certified in accordance with the Machinery Directive, the Low Voltage Directive, and the EMC Directive.

Insulation Value

U-value 1.57 W/(m²/K) for a fully-covered 4x4 m door or 1.77 W/(m²/K) with single-glazed B1, calculated as per EN12428

Airtightness

Rating 4, 1.8 m³/m² h, as per EN12426

Mechanical durability

Configured and tested for 1.000.000 opening cycles as per EN13241

Water tightness

Rating 3 as per EN12425

Wind load capacity

Rating 2, 3, 4 or 5 depending on size. Tested and rated according to EN12444 and EN12424

Safety

Our motorized doors naturally comply with all applicable safety requirements and standards. All risk of crushing eliminated in the design from the start. Optical crush protection device built into the door's center seals and additional safety photoresistor for placement in the door opening as standard. In addition to these functions, the motor/control unit contain a load monitor for personal protection. Rubber moldings designed to eliminate the risk of crushing between door leaf and door leaf, and door leaf and wall. At least 3 load-bearing brackets per leaf to prevent falls.

Brackets mounted on the door leaves

Made of steel, galvanized.

Window

Argon-filled D4-12 insulated-glass panes in six different standard sizes. Standard chest height approx. 1,070 mm. Seven-year warranty against condensation between glass panes. Window frames made from natural anodized aluminum profiles with thermal breaks.

Recessed pedestrian door

Can be provided for all variants. Always outward opening Placement is contingent on the door, refer to Project Planning Guide A minimum door height of 2,800 mm is required to fit a pedestrian door. The pedestrian door aperture is contingent on the door leaf width and can be as small as 567 mm. Min. door leaf width with recessed pedestrian door is 770 mm. Dorma Lock Housing DL 919-50.

Middle hinge

Natural anodized aluminum. Lubrication-free Teflon bushings.

Frame hinge

Steel, electrogalvanized, multi-size adjustable. Lubrication-free Teflon bushings. Screw into door surround.

Door leaf

Process-laminated sandwich panels. 50 mm thickness. Frame for fitting rubber seals, etc. Made of natural anodized aluminum profiles. Cast steel reinforcements as attachment points for hinges, controls, etc.

Insulation

50 mm freon-free polyurethane cellular plastic.

Door surrounds

Made of steel, crossbars min. 6 mm thick, side legs min. 4 mm thick.

Guide rails and brackets

Made of steel, hot-dip galvanized and adjustable. Screw into door surround.

Seals

Made of age-resistant EPDM rubber. The design meets the requirements of EN12453 without extra protection.

Siding

Inside and outside made of hot-dip galvanized sheet steel. Coated with 25 µm polyester paint.

Size – PriDrive standard

Max. width: 5,080 mm
Max. height: 4,800 mm
Max. opening: 23.15 - 23.75 m² (depending on design).

Size – PriDrive Boomerang

Max. width: 4.5 m
Max. height: 4.8 m
Max. opening: 21.6 m²

Warranty

7-year warranty on doors and mechanical components 2-year warranty on electronics. Refer to separate document detailing our warranty conditions.

Maintenance, service

Lowest service requirements on the market. Once/18 months or max. 30,000 openings.

Motor and gears

Prido PriDrive

Operating current

1.10 A

Supply voltage

3x400V+N+PE

Frequency

50 Hz

Speed, outer axle

Approx. 2.0 rpm

Opening and closing speed

Standard: approx. 11 s w/4-leaf, approx. 10 s w/3-leaf Boomerang: approx. 13 seconds, 4-leaf

Control unit

Prido PriDrive

Category according to EN13849-1

Pl"c" category 3

External fuse per phase

10-16 A

Internal fuses – Motor

3x2.5A slow blow 5x20 mm, breaking capacity 1500A

Internal fuses – Control unit

1x1A slow blow 5x20 mm

Energy consumption – Control unit

5 W

Temperature range

from -10 to +40 °C

Protection class

IP65

Intermittence

Continuously, max. 1 complete cycle / min

*Other technical info is the same as for manual doors.

TECHNICAL DATA – HINGED DOOR WITHOUT FRAME

CE Marking

The hinged doors are CE-marked in accordance with the Construction Products Regulation and according to applicable standard EN13241.

Insulation value

U-value 1.60 W/(m²/K) on a fully covered door 2.4x2.4 m or 1.87 W/(m²/K) on the corresponding door with B1 single-glazing. Calculated according to EN12428.

Air permeability

Class 4, 1.8 m³/m² h, according to EN12426.

Mechanical durability

Configured and tested for 1.000.000 opening cycles according to EN13241.

Water tightness

Rating 3 as per EN12425.

Wind load capacity

Classes 2, 3, 4 or 5 depending on size. Tested and rated according to EN12444 and EN12424.

Safety

Rubber strips designed to eliminate risk of crushing between door leaf and door leaf, and door leaf and wall. At least 3 load-bearing brackets per leaf to prevent falls.

Brackets mounted on the door leaves

Electrogalvanized steel or aluminum. On outward-opening doors, the steel fittings are also powder-coated.

Windows

Argon-filled D4-12 insulated-glass panes in six different standard sizes. Standard chest height approx. 1,070 mm. 7-year warranty against condensation between glass panes. Window frames made from natural anodized aluminum profiles with thermal breaks.

Pedestrian door option

One door leaf can be converted into a pedestrian door if the door height is max. 3,200 mm. The pedestrian door section is delivered with a Dorma DL 919-50 lock housing and Habo Atlanta lever handle. The strike plate is fitted on the side leaf, which is also equipped with a garage bolt for padlocking.

Pull handle

Natural anodized aluminum handle.

Frame hinge

Multi-size adjustable steel hinges. Electrogalvanized on inward-opening hinged doors and electrogalvanized and powder-coated on outward-opening doors. Lubrication-free Teflon bushings. Screws into door surround.

Lifting hinges (optional)

Raises the door during opening by 10 mm. Suitable for uneven floors. Creates a good seal when closed and enables soft and smooth opening without unnecessary wear on the bottom seal.

Door leaf

Process-laminated sandwich panels. 50 mm thickness. Max. size of individual door leaf 1250 x 4600 mm. Frame made from natural anodized aluminum profiles. Cast steel reinforcements as attachment points for hinges, controls, etc.

Door surrounds

Made of steel, concrete or wood. At least 3 mm steel for inward opening and at least 4 mm for outward opening. 3 different screw kits depending on the type of door surround.

Stable package

Hinged doors installed in washrooms or in stables require a special component package, such as additional rustproofing, for the warranties to be valid. Cannot be fitted later.

Safety

Rubber strips designed to eliminate the risk of crushing between door leaf and door leaf, and door leaf and wall. Optical crush protection strips at the closing edge of motorized folding doors. All motorized folding doors are equipped with an additional photocell on the folding side. At least 3 load-bearing brackets per folding door to prevent falls.

Seals

Made of age-resistant EPDM rubber.

Mounting bracket

Automatic locking in the open position on both inward and outward opening doors.

Siding

Interior and exterior in hot-dip galvanized sheet metal. Coated with 25 µm polyester paint.

7-year warranty

Refer to separate document detailing our warranty conditions.

Maintenance, service

The lowest service requirements in the market. Once/36 months for manual hinged doors.

Lock

Garage bolts for inner padlocking as standard. If cylinder locking on the interior and exterior is preferred, Prido Fix 480 is available as optional extra.

TECHNICAL DATA – HINGED DOOR WITHOUT FRAME

CE Marking

The hinged doors are CE-marked in accordance with the Construction Products Regulation and according to applicable standard EN13241.

Insulation value

U-value 1.58 W/(m²/K) on a fully covered door 2.4x2.4 m or 1.87 W/(m²/K) on the corresponding hinged door with B1 single-glazing. Calculated according to EN12428.

Air permeability

Class 4, 1.8 m³/m² h, according to EN12426.

Mechanical durability

Configured and tested for 1.000.000 opening cycles according to EN13241.

Water tightness

Rating 3 as per EN12425.

Wind load capacity

Classes 2, 3, 4 or 5 depending on size. Tested and rated according to EN12444 and EN12424.

Safety

At least 3 load-bearing brackets per leaf to prevent falls.

Frame

Frame in natural anodized aluminum profiles with thermal breaks and integrated frame sockets for screw fitting and adjustment. Type C frame for tunnel installation in the opening.

Brackets mounted on the door leaves

Internal galvanized steel fitting. External electro-galvanized and powder-coated hinges.

Windows

Argon-filled D4-12 insulated-glass panes in six different standard sizes. Standard chest height approx. 1,070 mm. 7-year warranty against condensation between glass panes. Window frames made from natural anodized aluminum profiles with thermal breaks.

Pedestrian door as standard

One door leaf serves as a pedestrian door. It is delivered with a Dorma DL 919-50 lock housing and Habo Atlanta lever handle. The strike plate is fitted on the side leaf, which is also equipped with a garage bolt for padlocking.

Hinges

3 type ASSA 3220 hinges per side.

Wall attachment

In steel or wood; the supplied screw set works for both options.

Door leaf

Process-laminated sandwich panels. 50 mm thickness. Max. size of individual door leaf 1204 x 2423 mm. Frame made from natural anodized aluminum profiles. Cast steel reinforcements as attachment points for hinges, controls, etc.

Seals

Made of age-resistant EPDM rubber, fitted in frame grooves. 33 mm high bottom seal for sealing against the floor.

Mounting bracket

Fitted fully internally and with automatic locking in the open position. Operated via internally placed drawstring.

Siding

Interior and exterior in hot-dip galvanized sheet metal. Coated with 25 µm polyester paint.

7-year warranty

Refer to separate document detailing our warranty conditions.

Maintenance, service

The lowest service requirements in the market. Once/36 months for manual doors.

ECOLID STEEL DOOR – TECHNICAL DATA

CE-marking

All doors are CE-marked pursuant to the Construction Products Regulation in accordance with applicable standard EN14351-1

Insulation Value

U-value 1.98 W/(m²/K) calculated as per EN10077-2

Airtightness

Class 4 in accordance with EN12207

Closing force

Class 2 in accordance with EN12046-2

Waterproofness

Class 3B in accordance with EN12208

Wind load capacity

Class 3 in accordance with EN12210

Door leaf

Process-laminated sandwich panels. 50 mm thickness. Max. size, width x height = 1329 mm x 2500 mm. Frame of natural anodized aluminum profiles. Steel reinforcements embedded in door leaf for the hinges, door closer and other components.

Standard sizes

Wall opening dimensions
900 x 2100 mm
1000 x 2100 mm
1200 x 2100 mm

Facing

Interior and exterior made of hotdip galvanized sheet steel. Lacquered with 25 µm polyester paint.

Insulation

50 mm freon-free polyurethane cellular plastic.

Frame and seals

Natural anodized profiles with thermal break. Integrated tracks for EPDM rubber seals.

Threshold

Strong threshold made from Magnelis-coated sheet steel.

Locks and fittings

Dorma 919-50 lock housing and adjustable Dorma 9009 strike plate as standard. Optional Step 40 electric strike plate with ASSA 222 lock also available. Other locks and strike plates available at extra charge. Habo Atlanta lever handle as standard. 3 x ASSA 3220 hinges.

Attachment

8 adjustment sleeves integrated in the aluminum frame. Self-tapping frame screws for steel and wood included.

Window

Argon-filled D4-12 insulated-glass panes in six different standard sizes. Approx. 1070 mm standard breast height. Seven-year warranty against condensation between glass panes. Window frames made from natural anodized aluminum profiles with thermal breaks.

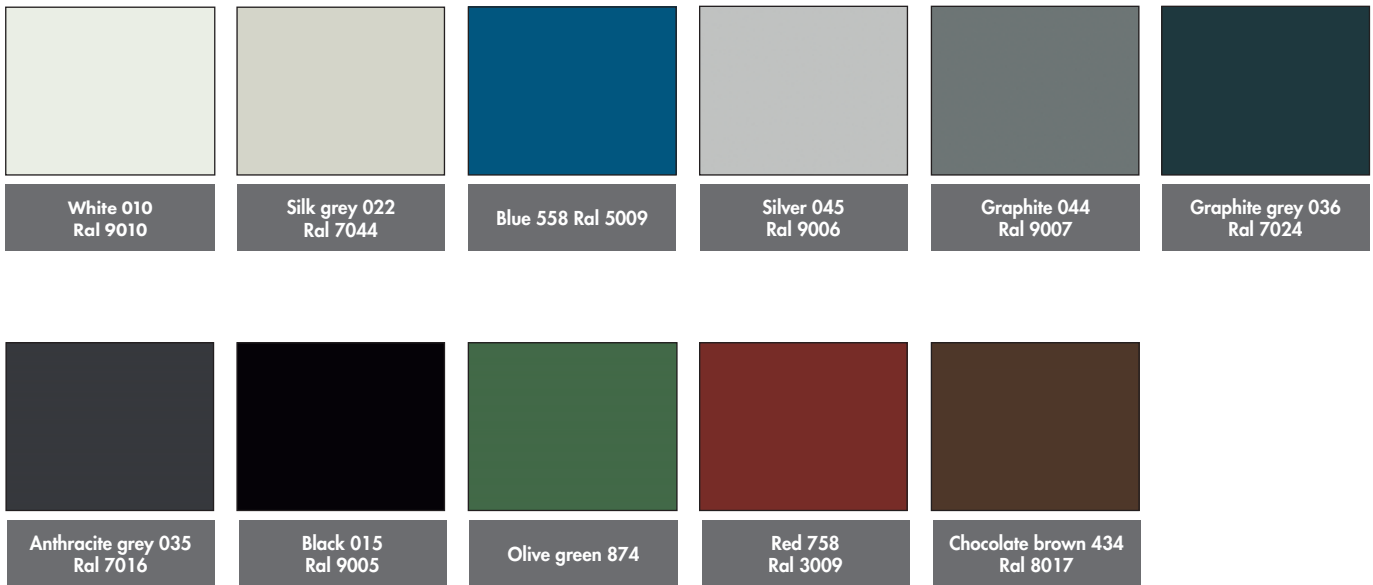
Manual Attack Resistance

Class RC2 in accordance with EN1627 Back Edge Lock (the classification applies provided that the door is equipped with an ASSA D12 round cylinder)

7-year warranty

See separate documents for our warranty terms and conditions.

ECOLID COLOUR CHART



BUILD YOUR PRIDO DOOR

With our door configurator you can build and design your own industrial door.
Visit our website for more information: www.prido.se









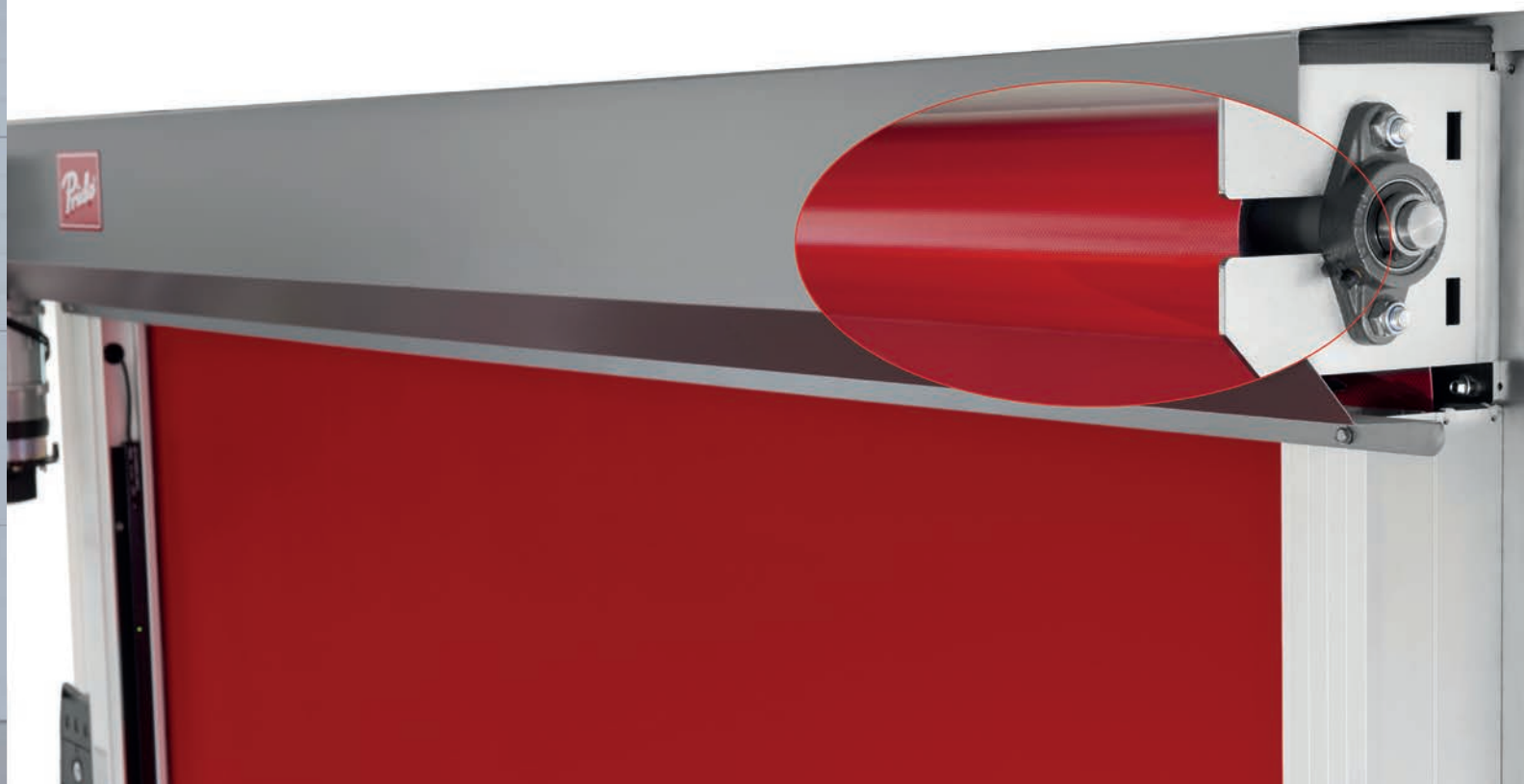
REVOLID[®]

RAPID ROLL DOOR

Inside buildings, between different departments, for example, there is sometimes a need for high-speed doors in order to maintain privacy, provide access for forklifts, etc. without the various work environments affecting each other. In these cases, our Revolid high-speed door is an excellent option. It has an opening speed of 1.8 m/s and its simple, reliable design makes it very affordable.

BENEFITS OF A RPID ROLL DOOR FROM PRIDO

- Endurance tested for 1.000.000 opening cycles
- 7-year warranty
- 2-year warranty on electronics
- 1.8 m/s opening speed
- Few parts and screw-on components make it quick and easy to install
- Requires minimal side and overhead space, 100 mm and 500 mm respectively.
- Motors and control units from Europe's largest manufacturer, German GFA
- Entirely made to measure in sizes up to 3500x3500 mm
- Light curtain in the opening for optimum safety and to reduce the risk of collisions
- Low maintenance costs
- Developed and manufactured in Sweden
- CE-certified according to European standard on doors EN13241
- Short delivery times and high delivery reliability



Motor



Bottom profile with baffle



Smart side profile with cable channel

MOTORS AND CONTROL UNITS

Motors and control units for the Revolid door made by the German company GFA, Europe's largest and leading manufacturer of door control equipment. The solution includes a range of possibilities, which are all characterized by operational reliability and ease of use.

THE FOLLOWING FUNCTIONS ARE INCLUDED AS STANDARD

- Frequency-controlled motor with 1.8 m/s opening speed
- Complete plug-in cabling between the motor and the control unit
- 4-pin 1x230 V CEE plug for mains connection, with plug-in connection in the control cabinet
- GFA TS971 control cabinet, rated IP65
- Integrated 3-key pad, open, stop, close
- Digital limit switch settings
- Digital adjustment of the direction of rotation (used when changing phase)
- Integrated radio receiver (only remote controllers required for radio control)
- 2 potential-free relay connectors
- Semi-opening function
- Automatic timed closing
- Power monitoring (prevents a person from being lifted up by the door)
- Programmable maintenance cycle counter (including countdown, warning, and stop function)
- Cycle counter for the total number of door openings
- Error memory and memory for programming changes
- Light curtain for personal safety that shields the door opening up to a height of 2.5 m
- UPS available as an optional battery backup

IN ADDITION TO THESE FUNCTIONS, THE CONTROL UNIT IS ALSO EQUIPPED FOR THE FOLLOWING CONNECTIONS

- Active safety rail (not required if door is equipped with light curtain)
- Extra emergency stop
- Extra pushbutton keypad or key switch
- Extra photocell
- External radio receiver
- Pull cord contact
- Code lock
- Radar



Remote controls



Pushbutton keypad



Pull cord contact



Radar



Coded locking



Control cabinet TS971



Prido®

11243808

9
A. BORN, 174000 V.
ST. 1000, 02. 02. 8
REVOLVED

REVOLVED

Pido

Pido



SAFETY

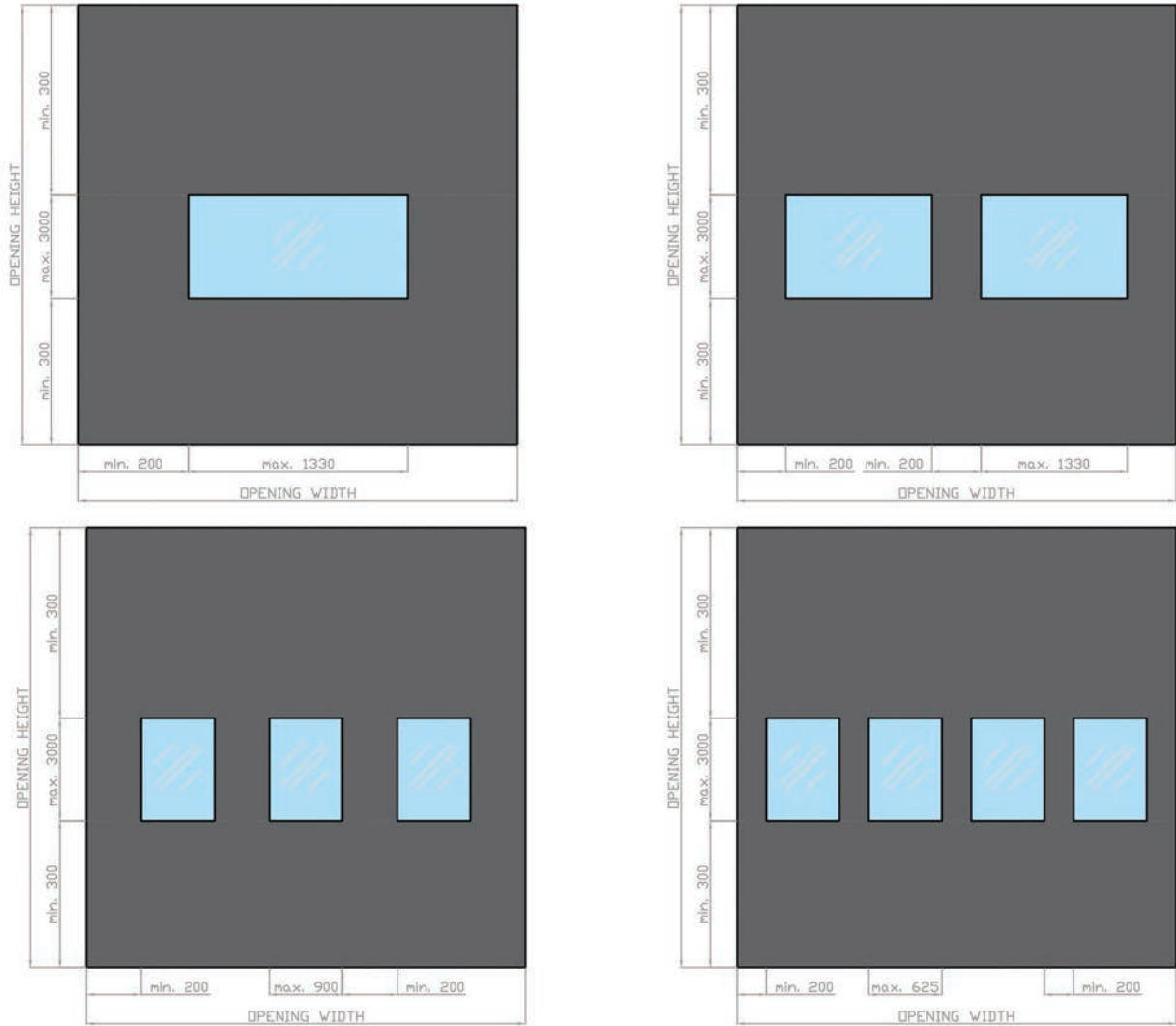
Safety was an important consideration during the development process, and the doors are designed and CE-marked in accordance with the applicable standard for doors EN13241. The doors are equipped with a light curtain in the opening. When closing, it prevents contact with the door leaf and, at the same time, reduces the risk of collision damage. The door reverses to its fully open position as soon as anything breaches the light curtain zone.



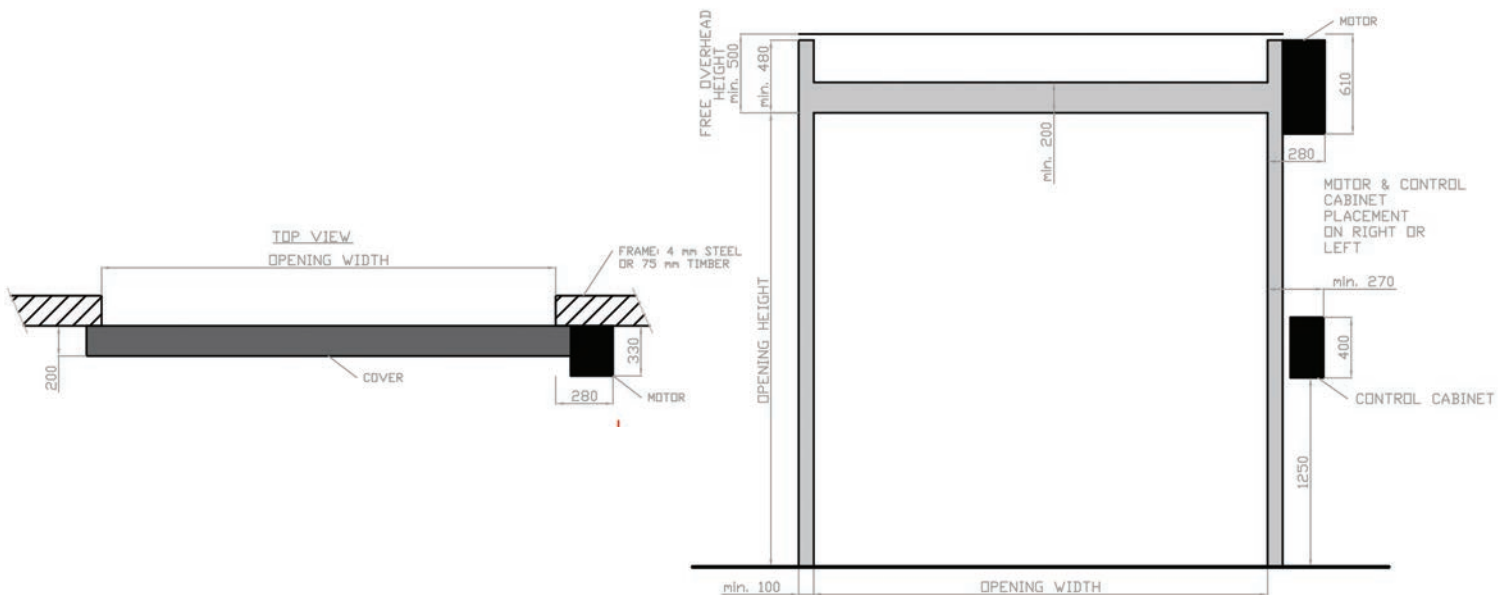
PROJECT PLANNING GUIDE

WINDOW OPTION

1.0 mm clear PVC HF-welded into the door canvas



DOOR SURROUND





Ni-Based

AMEXO



COLORS



RAL 3002



RAL 9016



RAL 5010



RAL 7037



REVOLID RAPOID ROLL DOOR – TECHNICAL DETAILS

CE Marking

All Revolid doors are CE marked in conformity with the Construction Products Regulation, the Machinery Directive, the Low Voltage Directive and the EMC Directive according to the relevant standard EN13241

Insulation value

NPD (no performance determined, designed for indoor installation)

Airtightness

NPD, in accordance with EN13241

Mechanical durability

Dimensioned and tested for 1.000.000 opening cycles according to EN12605

Water tightness

Class 0, in accordance with EN12425

Wind load capacity

Class 2, in accordance with EN12444 and EN12424. (This door is intended for indoor installation only)

7-year warranty

Refer to separate document detailing our warranty conditions. (2 year warranty on electronics)

Maintenance, service

Lowest service requirements on the market. Once/18 months or max. 50,000 openings.

Door leaf

Scratch-resistant, fabric-reinforced PVC canvas, 900 g/m², approx. 0.9 mm thick. Available in 4 standard colors. HF-welded Keder rails welded into place on the sides of the door canvas.

Window

1.0 mm clear PVC HF-welded into the door canvas.

Base bar

2-piece aluminum bar designed to permit small collisions without causing damage. The base bar also contains the weights that give the door canvas an extended shape in the closed position.

Base skirt

The 70 mm-high bottom seal made from EPDM rubber ensures a good seal against the floor. The design of the base seal, base bar and door canvas also provides a solution that seals all the way out to the corners of the door (which is otherwise a common source of issues with high-speed doors), and neither are there any expensive components that might be easily damaged upon impact. Personal safety is ensured via the light curtain in the sides of the door.

Side profiles

Heavy-duty extruded aluminum profiles in a 2-piece design that automatically create cable ducts for various door control units and motor connections, while at the same time acting as guides for the door leaf.

Seals

The canvas is sealed in narrow grooves in the side profiles. Aluminum profile to reduce the opening between the canvas and the wall above the door.

Door surrounds

Made from steel with a minimum thickness of 4 mm, or from wood with a minimum thickness of 75 mm.

Wall brackets and bearings

Heavy-duty, zinc-plated, 5 mm-thick and laser-cut plates with elongated holes for easy installation and adjustment. Heavy-duty ball bearings bolted to the bearing brackets.

Motor

Frequency-controlled motor GFA FI 4.250, 1-phase 230V, enclosure class IP65. Built-in brake/catching device for fall protection. Temperature range -5 to +40 °C.

Control unit

GFA TS971, frequency 50/60 Hz, operating voltage 1-phase 230 V, fuse 10-16A, enclosure class IP65, humidity up to 93%, non-condensing. Temperature range -5 to +40 °C.

Light curtain

Encased in aluminum and bolted to side profile. 1.5 m cabling on both transmitter and receiver, LED-type status display.

Canvas drum

Made of steel, diameter 133 mm, with welded end caps and shafts.

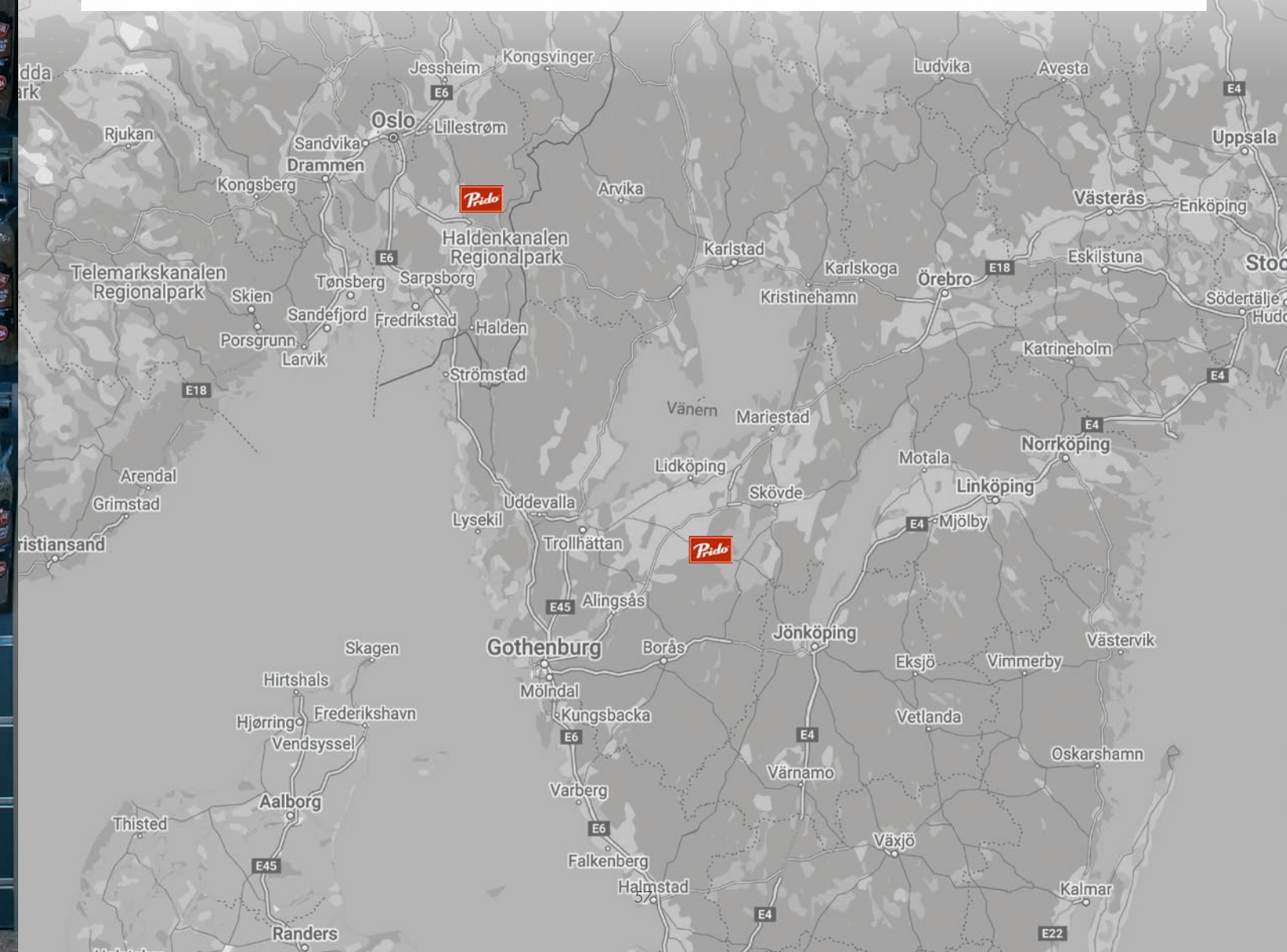
UPS (optional extra)

Battery backup in the event of power outage. Can perform at least 1 opening after 4 hours of power outage.



DELIVERIES

High delivery reliability is important. The doors must arrive on schedule and without any transit damage. Since 2010, Prido has invested in its own delivery vehicles. Today, Prido delivers 90% of all its doors on the Swedish market and 30% of all its doors on the Norwegian market. Our documented delivery reliability of 99% is something we are proud of.









Professional Industrial Doors

Prido has 50 years of solid experience and is one of the leading companies in the industry. We design, develop, manufacture, and market professional door solutions for industry and other door users across northern Europe. Our aim is to offer customers the most attractive range of market-suitable products in the industry.

www.prido.com

